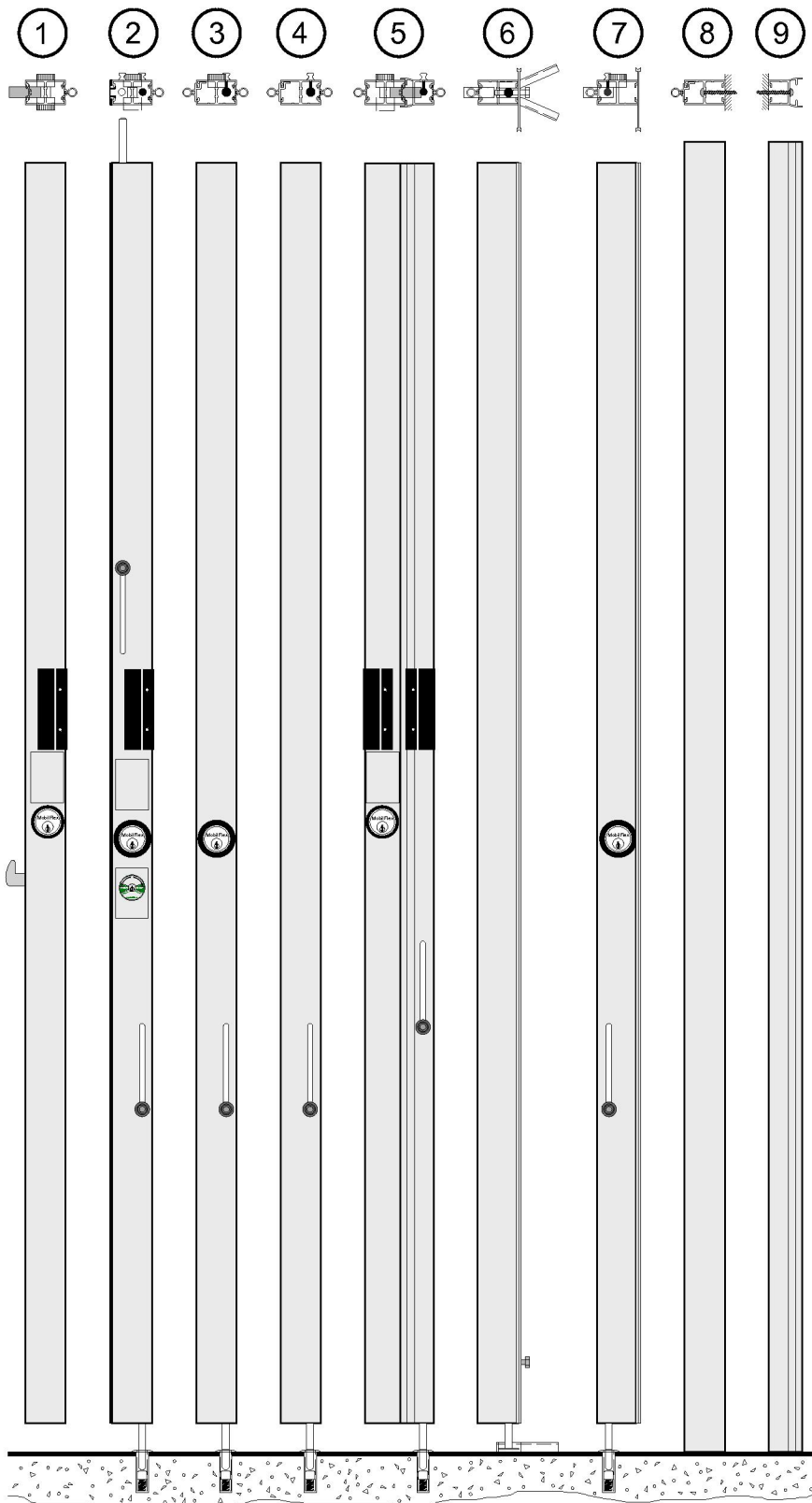
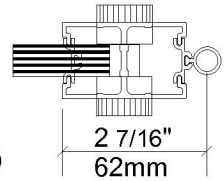


All posts are integral - fully joined to the rest of the grille or closure except No 9



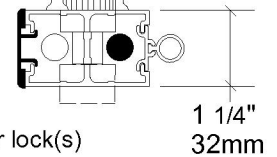
1

Lead post
with hook lock
and cylinder lock(s)



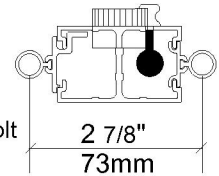
2

Lead post with
top and bottom
shootbolts and cylinder lock(s)



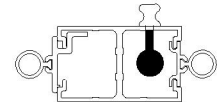
3

Intermediate post
with bottom shootbolt
and cylinder lock



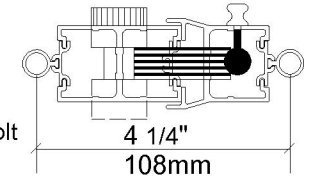
4

Intermediate post
with bottom shootbolt and knob



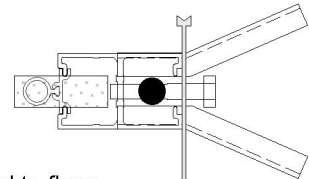
5

Bi-part assembly
with bottom shootbolt
and cylinder lock(s)



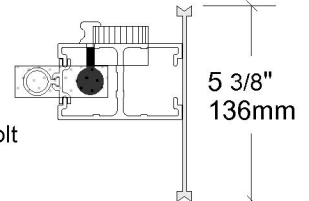
6

Floating end post
with top stop and
bottom "V" stop fitted to floor



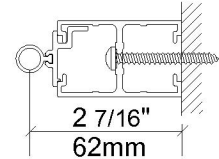
7

Floating end post
with bottom shootbolt
and cylinder lock



8

Fixed end post



9

Wall striker post
(jamb)

